



# BASKET WAVE PULLOVER

Designed by **IKNITITATIVES/NATALIE WILSON**

## FINISHED SIZE

Chest: 36" (40", 44", 48")

Length: 21" (22", 23", 24")

## MATERIALS

14 (17, 19, 22) balls Lana Grossa Bingo (100% wool, 88 yds in 50 g)  
Shown in color #93

## NEEDLES

Size US 8 (5 mm) straight or circular needles and size US 7 (4.5 mm) set of 4 double pointed needles **or size required to obtain gauge**

Stitch holders (4)

## GAUGE

24 sts and 30 rows = 4" in Basket Wave pattern, slightly stretched, using larger needles

## NOTES

- Shoulders are shaped using short rows to facilitate easy and neat assembly.
- SPECIAL W&T:** Move yarn to RS, sl next st from LH to RH needle, move yarn to WS, sl st back to LH needle, turn work.  
**To pick up a wrap on a K st:** Work to wrapped st, then insert RH needle under wrap and Kwise into wrapped st. K wrap and st together.  
**To pick up a wrap on a P st:** Work to wrapped st, then insert the RH needle from behind into the back loop of the wrap and place on LH needle. P wrap and st together.

## BACK

With larger needles, CO 106 (118, 130, 142) sts.

**ROW 1 (RS):** K2 [0, 2, 0], {P2, K2} 2 (4, 3, 5) times, work Basket Wave pattern from chart beg with row 1 over next 86 (86, 102, 102) sts, {K2, P2} 2 (4, 3, 5) times, K2 [0, 2, 0].

**ROW 2 (WS):** P2 [0, 2, 0], {K2, P2} 2 (4, 3, 5) times, work Basket Wave pattern over next 86 (86, 102, 102) sts, {P2, K2} 2 (4, 3, 5) times, P2 [0, 2, 0].

Continue in K2 P2 rib and Basket Wave pattern as established until work measures 13" (14", 14", 15") from CO edge, ending with a WS row.

## SHAPE ARMHOLES

Maintaining pattern as established, BO 4 (4, 6, 8) sts at beg of next 2 rows, then BO 3 (4, 4, 6) sts at beg of next 4 rows — 86 (94, 102, 102) sts rem. Continue working in pattern until piece measures 8" (8", 9", 9") from beg of armhole shaping, ending with a WS row. \*\*

## SHAPE SHOULDERS

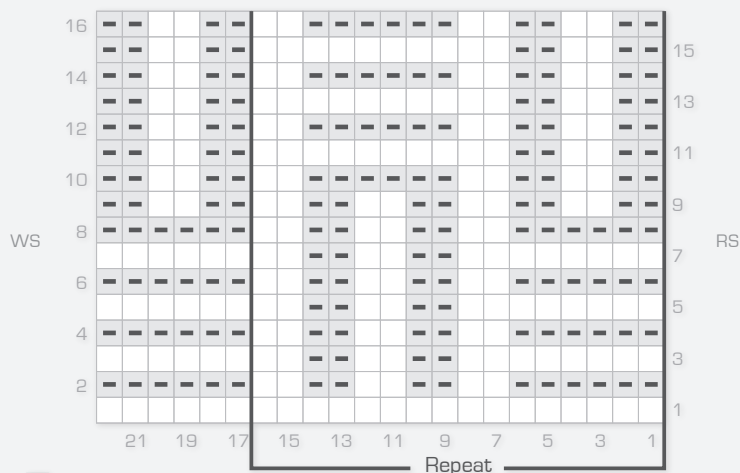
**NEXT 2 ROWS:** Work in pattern to last 6 (7, 7, 7) sts, W&T.

**NEXT 2 ROWS:** Work in pattern to last 12 (14, 14, 14) sts, W&T.

**NEXT 2 ROWS:** Work in pattern to last 17 (20, 20, 20) sts, W&T.

**NEXT 2 ROWS:** Work in pattern to last 22 (26, 26, 26) sts, W&T.

## BASKET WAVE PATTERN



K on RS, P on WS

P on RS, K on WS

Cut yarn and sl sts not worked back to LH needle. Join yarn, leaving 36" tail and work in pattern 22 (26, 26, 26) sts, picking up wraps, BO center 42 (42, 50, 50) sts for back neck, then work in pattern 22 (26, 26, 26) sts, picking up wraps. Cut yarn, leaving 36" tail. Place shoulder sts on 2 separate st holders.

## FRONT

Work same as for Back to \*\*.

### SHAPE SHOULDERS & FRONT NECK

**NEXT ROW (RS):** Work in pattern 30 (34, 34, 34) sts and place on holder for left shoulder, BO center 26 (26, 34, 34) sts for front neck, then work in pattern to last 6 (7, 7, 7) sts, W&T. Continue working on right shoulder sts only.

**NEXT ROW (WS) and ALL WS rows:** Work in pattern to end.

**NEXT RS ROW:** BO 3 sts, work in pattern to last 12 (14, 14, 14) sts, W&T.

**NEXT RS ROW:** BO 3 sts, work in pattern to last 17 (20, 20, 20) sts, W&T.

**NEXT RS ROW:** BO 2 sts, work in pattern to end, picking up wraps. Cut yarn and place 22 (26, 26, 26) shoulder sts on holder.

With WS facing, rejoin yarn to left shoulder sts at neck edge. Work in pattern to last 6 (7, 7, 7) sts, W&T.

**NEXT ROW (RS) and ALL RS rows:** Work in pattern to end.

**NEXT WS ROW:** BO 3 sts, work in pattern to last 12 (14, 14, 14) sts, W&T.

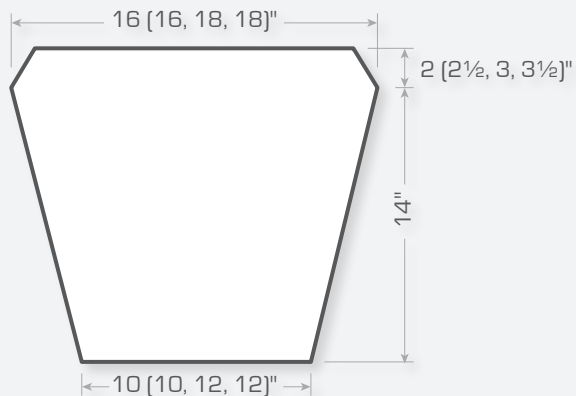
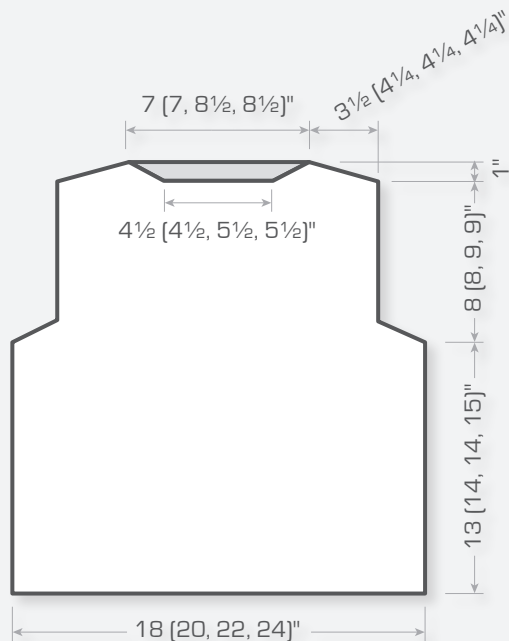
**NEXT WS ROW:** BO 3 sts, work in pattern to last 17 (20, 20, 20) sts, W&T.

**NEXT WS ROW:** BO 2 sts, work in pattern to end, picking up wraps. Cut yarn and place 22 (26, 26, 26) shoulder sts on holder.

## SLEEVES

With larger needles, CO 54 (54, 66, 66) sts.

**NEXT ROW (RS):** {K2, P2} to last 2 sts, K2.  
**NEXT ROW (WS):** {P2, K2} to last 2 sts, P2.



Work in K2 P2 rib as established for 4 rows more. Continue in K2 P2 rib, inc 1 st at beg and end of every 4th row 18 times — 90 (90, 102, 102) sts. Work even until piece measures 14" from CO edge, ending with a WS row. Dec 1 st at beg and end of every other row 6 (4, 3, 2) times, then every 4th row 0 (2, 3, 4) times — 78 (78, 90, 90) sts. BO.

## FINISHING

With wrong sides together (seam will show on RS of garment as a decorative detail), join back to front at shoulders using 3 needle BO.

Sew sleeves into armholes. Sew side and sleeve seams.

## NECK BAND

With RS facing and double pointed needles, CO 3 sts. Beg at right shoulder seam, pick up 1 st from neck edge. Slide sts to opposite end of needle. \* Do not turn. K2, SSK, pick up and K 1 st from edge, slide sts to opposite end of needle. Rep from \* around neck edge. Graft ends of band together.



## ABBREVIATIONS

---

beg.....begin/beginning	Pwise.....purlwise
BO.....bind off	rem.....remain/remaining
CC.....contrasting color	rep.....repeat/repeating
CO.....cast on	rev.....reverse
dec.....decrease/decreasing	RH.....right hand
dbl dec.....double decrease – slip 2 sts together as if to K them together, K1, pass 2 slipped sts over.	RS.....right side
inc.....increase/increasing	sl.....slip
K.....knit	SSK.....slip, slip, knit — sl 1 st as if to K; sl another st as if to K; sl both sts back to LH needle and K them together TBL.
K2tog.....knit 2 together (K3tog = knit 3 together, etc.)	st st.....stockinette stitch
Kwise.....knitwise	st(s).....stitch(es)
LH.....left hand	TBL.....through back loop
m1 .....make 1 — Use the tip of your left needle to lift up the strand running between the st just worked and the next st. K into the back of this strand, twisting the loop to avoid making a hole.	W&T.....wrap & turn — Used to prevent holes at the turning point in short rows. With yarn toward WS, sl next st to RH needle, bring yarn to RS, sl st back to LH needle and turn the piece, ready to work back in the other direction.
MC.....main color	WS.....wrong side
P.....purl	WYIF.....with yarn in front
P2tog.....purl 2 together (P3tog = purl 3 together, etc.)	WYIB.....with yarn in back
PM.....place marker	yo.....yarn over
PSSO.....pass the slipped stitch over the st just knitted	